



INF AUSTRALIA

ANNUAL REPORT

2020-21

For you know the grace of our Lord Jesus Christ, that though he was rich, yet for our sakes he became poor, so that by his poverty we might become rich.

2 Corinthians 8:9

COVER PHOTO Women washing hands before their monthly meeting in Malikabota, Kanakasundari Rural Municipality, Jumla.

INF Australia is a Christian mission serving the physical and spiritual needs of Nepali people. We are part of an international family of organisations, and work in partnership with INF Nepal and a small number of other partner organisations.

We pay our respects to all the staff and volunteers of our partner organisations in Nepal who have worked with courage and compassion in the face of COVID-19.

We offer our prayers for all who have been made sick and suffered due to COVID-19 and our condolences to all who have lost loved ones.

We honour and acknowledge the resilience and tenacity of all who have worked together to keep communities safe and who have responded with generosity at this time of crisis.

OUR VISION

Life in all its fullness for Nepal's poor and marginalised people and communities.

OUR MISSION

To share and support our partners' demonstration of God's love through medical, disaster response, and community development work with poor and marginalised people in Nepal.

OUR VALUES

We are an organisation of faith. We strive for humility. We are committed to justice. Because of this, we value:

- Faith in action
- A priority for people in poverty
- Teamwork, collaboration and partnership
- Integrity and accountability
- Learning and innovation



CONTENTS

Chair and CEO's Reports.....	2
Our Work.....	6
Community	6
Disaster Response and Resilience	9
Health.....	10
Our People.....	12
Activities in Australia.....	14
Finance Snapshot	16
Detailed Financials	18
Auditor's Report.....	23
Governance	24
INF Family and Partnerships.....	26



Seed money support to a Self Help Group [SHG] member in Mugu.

Chair and CEO REPORTS



R. Underwood



Ben Thibley

Considering this is the second year of COVID-19 impacts on Nepal, Australia and the world, we are pleased and proud at the resilience that the INF Australia team and our partners in Nepal have shown. Under the most difficult circumstances, particularly the horrific wave of the Delta variant through Nepal earlier this year, our partners have carried out essential relief work, carried on essential medical programs, and continued to patiently go about the work of community development.

We are deeply concerned about the impacts of COVID-19 on Nepal. With almost 800,000 reported cases since the start of the pandemic, and sadly around 10,000 reported deaths and many more unreported cases, illnesses and deaths, the immediate health impacts have been horrific. For a time, many hospitals and health-posts were overwhelmed with the number of patients, particularly at the height of the second wave in May this year.

Of course, the social and economic impacts of the pandemic are also far-reaching. More than 1.5 million jobs have been lost, particularly for those working in the informal economy, and over one million migrant workers have been forced to return to Nepal – cutting the income their remittances were able to provide for their families. Children have had their education disrupted, food insecurity has increased for many households, and rates of distress, abuse and domestic violence among women and vulnerable adults have increased.

Yet we and our partners will be with these communities for the long-term as they respond, rebuild and adapt. Working to bring hope and healing in these circumstances is the most profound witness to God's grace and we are humbled and grateful to be able to play our role in supporting our partners in their work.

INF Australia achieved a significant milestone this year. Every five years, INF Australia undergoes a thorough and rigorous

review by the Department of Foreign Affairs and Trade [DFAT] to ensure that our work, governance, financial stewardship and reporting all meet the highest possible standards. In previous years, INF Australia has been accredited at DFAT's "base" level – allowing us to receive some government funding for community programs. However, we are pleased that for the next five years we have been accredited at "full" level – meeting the highest level in all of DFAT's standards. It is gratifying that the professionalism and effectiveness we constantly strive for have been recognised in this way. This new level of accreditation means that INF Australia will receive extra funding through the Government's Australian NGO Cooperation Program in proportion to our overall spending on community programs and our public donations.

This accreditation also brings with it new obligations and opportunities. To prepare for these, we have made some timely and strategic recruitments to build INF Australia's capacity to manage our partnerships in Nepal, to raise awareness and funds in Australia, and to engage the Australian community in our work. It is exciting to bring new members into the team and we look forward to seeing the difference that the combined experience, expertise and passion of the team will make to our work.

We are grateful to God, and thankful for the generosity of supporters, for enabling us to support our partners in Nepal as they provide treatment and care for people with disabilities and leprosy, support community empowerment and transformation, and work with communities to prepare for and respond to disasters and the impacts of climate change.

And, of course, our thanks go to the supporters around Australia whose generosity and prayers uphold INF and contribute to the remarkable and ongoing individual and community transformation you will read about in this report.

OUR PURPOSE & STRATEGY

INF Australia is a small organisation, with a big heart, driven by an expansive vision and serving a wonderful God. We work to raise awareness and support for the work of INF Nepal and our other partners in Nepal. Through this work, we aim to see transformation for individuals and communities – people working together to claim their rights, experiencing hope and healing physically and spiritually, and overcoming the effects and the causes of poverty and marginalisation. We do this by:

1 Being an effective partner. We seek to be an engaged, accountable, responsive and effective partner supporting the transformational work, and strengthening the capacity, of our Christian partners in Nepal, particularly in the areas of:

- Care and rehabilitation for people with disability; helping them to be recognised as made in the image of God and accepted, participating members of their communities,
- Empowering women and children in rural communities;

helping them to recognise their strengths and achieve their ambitions, and promoting the role of women in leadership and decision making, and

- Building resilience in communities and disadvantaged households in the face of disaster risk and climate change.

2 Nurturing deeper fellowship among churches and community in Australia and churches and community in Nepal. We aim to facilitate meaningful and holistic responses to poverty and injustice in Nepal and to develop and strengthen relationships among individuals and communities that contribute to "life in all its fullness" for everyone who supports and participates in our work.

3 Being a learning organisation. In humble collaboration with our partners, we aim to ensure that we are able to develop & share knowledge of what works and to innovate effectively to meet current and future challenges.

“... I pray that you, being rooted and established in love, may have power, together with all the Lord’s holy people, to grasp how wide and long and high and deep is the love of Christ, and to know this love that surpasses knowledge—that you may be filled to the measure of all the fullness of God.”

Ephesians 3:17-19

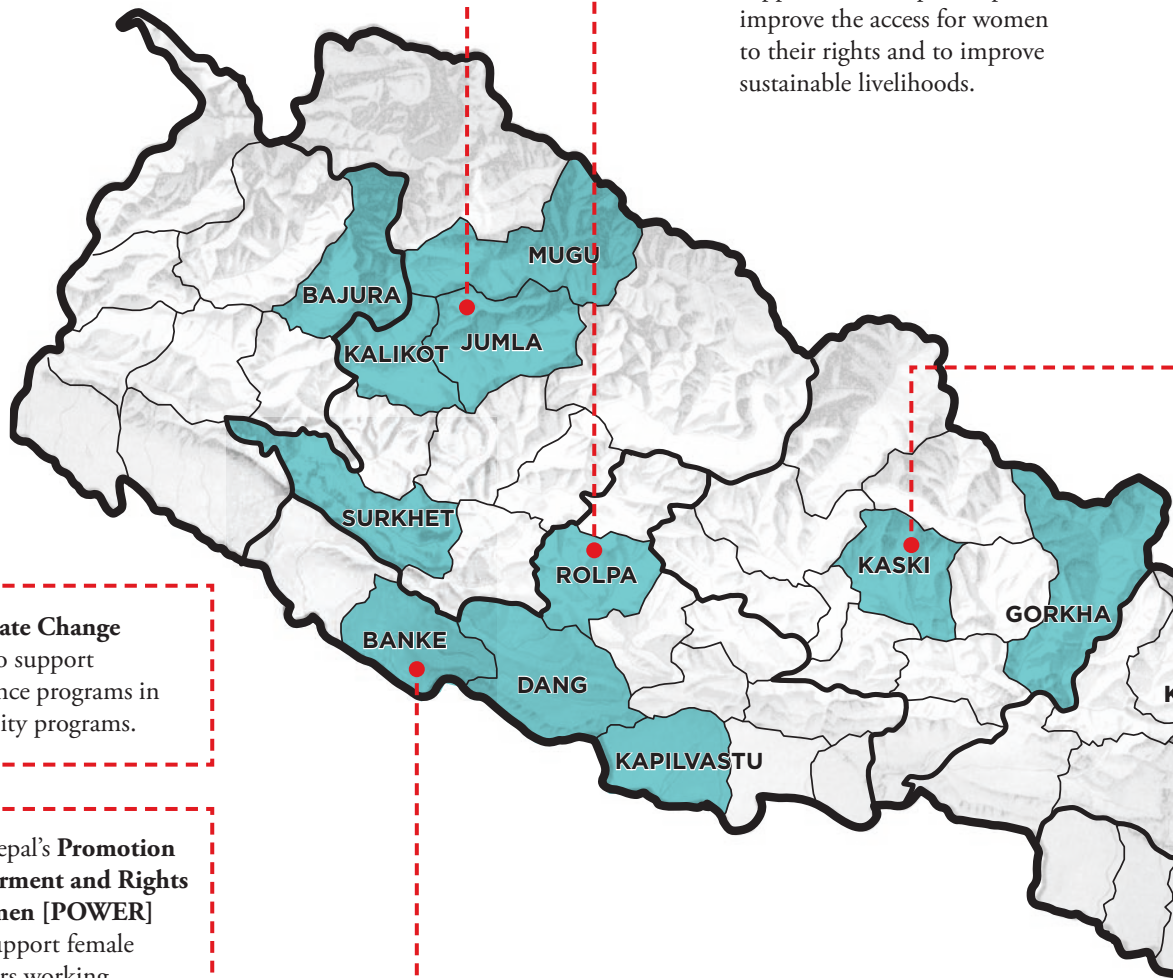


Palliative Care has upgraded its community vehicle with an elevator to transport wheelchair users. This vehicle is also used to transport Persons With Disability for COVID-19 vaccinations.

Map of Nepal showing location of INF Australia supported projects and workers

We supported INF Nepal's **Women's Empowerment and Livelihoods [WEAL]** project, which works with Self Help Groups to improve health and livelihoods for the whole community.

We supported INF Nepal's **Economic Development of Underprivileged Communities through Agricultural and Technological Empowerment [EDUCATE]** project, which supports Self Help Groups to improve the access for women to their rights and to improve sustainable livelihoods.



We supported a **Climate Change Adaptation Officer** to support adaptation and resilience programs in INF Nepal's community programs.

We supported INF Nepal's **Promotion of Women's Empowerment and Rights Targeting Rural Women [POWER]** project to train and support female human rights defenders working to advocate for women's rights.

We partnered with three partner organisations – **Milap, Mahila Milijuli, and Sarwagin Sewa Samaj** – to support women's empowerment and livelihoods, and to advocate for and support poor patients in the regional hospital.

We provided funding to INF Nepal's **Shining Hospital Banke** to support medical care, counselling, education, awareness, outreach, income generation, lobbying and advocacy for people affected by leprosy.

We supported **Inge Baumann-May and Neil May**, who are from Alice Springs and were based in Nepalgunj, working remotely from Australia after COVID-19 restricted their travel. Inge served as INF Nepal's Public Health Advisor, with a focus on maternal and child health. Neil provided support for pastoral and self-care programs within INF Nepal.



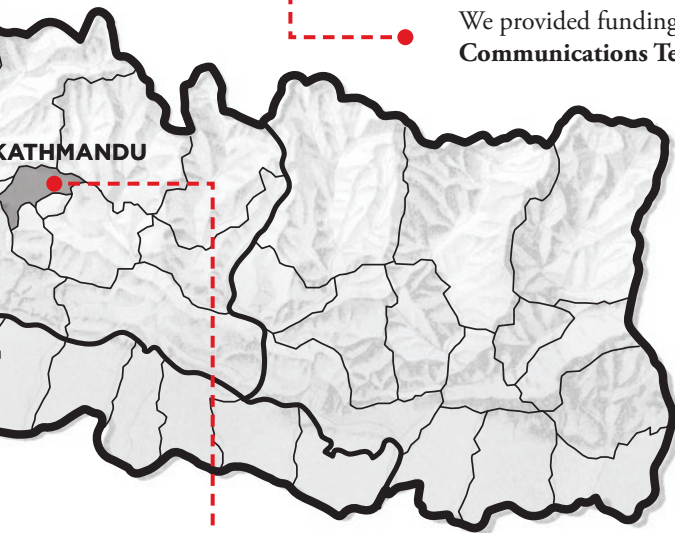


We supported **Yuck Ming Poon**, from Hong Kong, who is serving as INF Nepal's Leprosy Advisor, based in Pokhara.



We supported the core operations of INF Nepal's **Green Pastures Hospital**, which provides holistic care and support for people with disability. We also supported infrastructure modifications to respond to COVID-19, and the development of a Palliative Care Centre.

We provided funding for INF Nepal's **Communications Team** in Pokhara.



We supported the **INF International [INFI] Office** in Kathmandu to coordinate transfer of funds internationally, support expatriate advisors and liaise with the Government of Nepal.

We supported **Phil Morris and Elle Morris** [along with **Evie, Jude and Isaac**], who are from Sydney Australia. Phil served as Nepal Country Director for **INFI** and Elle provided HR Support to the **Kathmandu International Study Centre [KISC]**.

SUSTAINABLE DEVELOPMENT GOALS

Our work contributes to the Sustainable Development Goals – the global blueprint for a better and more sustainable future for all.



Our work

COMMUNITY DEVELOPMENT

INF Australia supported three partners [International Nepal Fellowship Nepal, Mahila Milijuli and Milap] implementing six projects across Community Health & Development, Women's Empowerment, and Integrated Rural Livelihoods.

These projects help individuals and groups to improve agricultural practices and improve and maintain livelihoods. We support a strong focus on women's empowerment, inclusion of people with disabilities, and the reduction of discriminatory practices and gender-based violence. The projects also help build community resilience in the face of disasters and the uncertain, but increasing, impacts of climate change.

Achievements:



Over 11,000 project participants [85% women]



Over 4,000 households demonstrating improved income and/or food security



310 Women/Adolescent Activist and Human Rights Defenders trained and mobilised



Gender Responsive Budgets developed in 5 Districts



1,632 households with improved access to safe drinking water



Local Disaster and Climate Resilience Plans supported in 5 Districts

**Australian
Aid** 

INF Australia acknowledges the support of the Australian Government through the **Australian NGO Cooperation Program** [ANCP] for its **CHD** and **POWER** programs.



Fighting Against Gender Discrimination

Kailaspati* Kurmi lives in a village in the Kapilvastu district of Nepal. Married with a daughter and a son, she has always been concerned about the lack of opportunities for girls and women in her community. Despite her husband opposing her acting independently, Kailaspati has begun to work against gender discrimination within her community. In her village, it was quite common for families to neglect girls' education.

“I have lived here for 30 years, and I am the first woman whose daughter has progressed past basic

**Name changed for privacy purposes.*

school level. She is now twenty-one and studying Business. I am so proud and happy to have been able to provide for her study in Kathmandu. To support this, my earlier days were very hard and I had to fight for it in my community and also within my own home.”

INF Nepal's Community Programs – including the POWER Project focusing on women's rights and empowerment – have contributed many significant changes to Kailaspati's community. By promoting unity, women's participation, an awareness of gender issues and the importance of girls' education, these projects have helped the women in the community to speak up and take action against harmful cultural practices, such as early and child marriage.

Kailaspati is the Gender Focal Person for her community, providing support to other women and families, and working with them to advocate for change.



31st एन एन ईएन कोविड-१९ प्रतिक्रमा कार्य
INF NEPAL COVID-19 RESPONSE WORK



Our work

RESPONDING TO COVID-19 AND DISASTERS

INF Australia helped our partners [INF Nepal, Asal Chimekee Nepal, Milap, Sarwagin Sewa Samaj and Singla Tourism Area Development Society respond to COVID-19 and to landslides and floods.

Support for COVID-19 response occurred throughout the year as the first wave carried on in the first half of the financial year, while the “second wave”, driven by the highly infectious Delta variant, accelerated throughout the period March to June 2021. The work of our partners included working with local authorities to provide masks, PPE, equipment and oxygen to health posts, supporting families with emergency food packages and other forms of support, and supporting government information and awareness campaigns to promote good health behaviour and prevent the spread of COVID-19.

Achievements:



COVID-19 fever clinics set up at INF Nepal's hospitals



Oxygen cylinders, concentrators, and other equipment provided to establish 5 isolation centres in Dhading and Jumla Districts



24 health posts in four districts provided with beds and medical equipment for COVID-19 response



3,909 households provided with emergency food supplies in response to COVID-19, flooding and fire outbreaks



165 community groups provided with handwashing stations, sanitiser and masks

Our work

HEALTH AND DISABILITY

INF Australia supported two partners [INF Nepal and Sarwangin Sewa Samaj], providing support to two hospitals [Shining Hospital Banke and Green Pastures Hospital] and a patient advocacy program.

These projects provide holistic care and help prevent disability among poor and disadvantaged people in Nepal. These projects focus on providing treatment, care and rehabilitation support for people affected by leprosy, spinal cord injury [SCI], spinal disorders, hearing disabilities, cerebral palsy, or who have life-limiting illnesses. The projects work together to provide professional physical, psychological, social and spiritual support for patients, as well as their families and communities.

Achievements:



100% of leprosy patients discharged with improved health conditions



243 new cases of leprosy identified and followed up



1,136 assistive devices [wheelchairs, toilet modifications, pressure-relieving mattresses] provided to SCI patients



Over 14,000 sessions of occupational, physio and speech therapy provided



Over 1,600 counselling sessions provided to patients and their families



Over 302 patients and carers supported through telehealth services



Extension and improvements to Outpatients Department, Leprosy Ward, and Rehabilitation Accommodation at Green Pastures Hospital



A Life-Changing Care

Yamuna*, is the lone breadwinner of her family of five. Due to the absence of her father, Yamuna started working at a very young age. While proud that she could earn and support her family, this effort for daily survival cost Yamuna a lot. She left school in Grade Two and had to take care of her younger sister while her mother went to work.

Married at a very young age, Yamuna experienced almost constant abuse and coercive control from her husband and his family. After three years, Yamuna and her husband separated for good.

Around one year ago, Yamuna was diagnosed with leprosy. She experienced constant and growing bodily pain, and blisters started to appear in her ears. Yamuna was advised to visit Green Pastures Hospital [GPH] in Pokhara, where she could get her skin tested.

**Name changed for privacy purposes.*

“I didn’t know much about leprosy before, I was sad and scared when I found out about it. I realised that my grandfather also had leprosy and I was scared because I had witnessed how people behave towards leprosy sufferers”.

GPH provides inpatient services, healthcare education, self-care techniques, reconstruction and septic surgeries and provides assistive devices including footwear to leprosy patients in order to improve their health condition.

Because her case was detected early, and with the ongoing use of medication, Yamuna’s condition is improving. As well as the physical and medical care provided at Green Pastures Hospital, Yamuna is particularly grateful for the humility and kindness she received from doctors and nurses.

“A small act of kindness can change peoples’ lives, and Green Pastures is providing us with kindness, love and care.”

Our PEOPLE

We support a number of expatriate volunteer workers in Nepal, who provide their gifts, skills and experience to help support our vision of “life in all its fullness for Nepal’s poor and marginalised people and communities.”

These volunteers help to support the capacity and effectiveness of our partner, INF Nepal, by providing technical advice, training, mentoring, and other forms of support. They live as salt and light in their local communities.

We wish to acknowledge the additional stresses and difficulties that COVID-19 has brought to all our workers in Nepal.



Neil May & Inge Baumann-May

Based in Nepalgunj for most of their time, Inge and Neil returned to Australia this year due to the COVID-19 outbreak and international travel restrictions. Inge completed her role as INF’s Public Health Advisor – focusing on Maternal and Child Health – with a period of remote work from their home in Adelaide. Neil worked with counselling organisations on suicide prevention and with INF Nepal to develop a staff self-care program.



Yuek Ming Poon

Ming lives in Pokhara and is serving as INF Nepal’s Leprosy Advisor. She works with nursing, clinical and administrative staff to provide training, guidance and support to support the provision of high quality care to patients with leprosy.



Phil and Elle Morris [with Evie, Jude and Isaac]

The Morris family were based in Kathmandu, with Phil serving as INF International’s Nepal Country Director [NCD] and Elle providing HR assistance to Kathmandu International Study Centre, where the children were students. As NCD, Phil helped oversee the administrative and pastoral support for expatriates serving with INF, supported the INFI team to coordinate with the Government and liaise around relevant agreements required for INF to operate, and worked on INFI’s COVID-19 risk management and response plans. The family completed their service and returned to the UK during this year.

Our activities

IN AUSTRALIA

In Australia, we share and support our partners' work as they demonstrate God's love for all through transformational medical, disaster response and as they demonstrate God's love for all through medical, disaster response and community development work with poor and marginalised people in Nepal.

We encourage, challenge and equip Australians to support this work financially, in prayer, through advocacy, and by using their skills and gifts to volunteer and serve in Nepal and with Nepali people in Australia.

We are deeply grateful for the generous and faithful contributions made by all our supporters.

Responding to COVID-19

COVID-19 continued to cause major disruptions to our ability to travel internationally and within Australia. By working with capable local leaders and consultants in Nepal, as well as online tools for meetings and collaboration, we were able to maintain our connection and oversight with partners and projects in Nepal. Our ability to engage with churches, schools, and other groups in Australia was greatly restricted, but we are grateful that so many people have engaged with us online – such as the webinars on An End to Leprosy, Foundations for Life, and Breathing the Bible in Nepal – and responded with such astounding generosity to our COVID-19 emergency appeal. We know that we are emerging a stronger organisation because of this support, having faced these challenges.

Accreditation

Every five years, INF Australia undergoes a rigorous review by the Department of Foreign Affairs and Trade [DFAT] to ensure that our work, governance, financial management and reporting all meet the highest standards. In previous years, we have been accredited at “Base” level, which allowed us to receive some government funding for community programs.

This year, we have been accredited at “Full” level, meeting the highest standard for all of DFAT's criteria. The INF Australia team, particularly Russ our Nepal Programs Manager and Roger our Finance Manager, put in a huge amount of work over the year [and prior to that] to achieve this outcome. I am extremely proud that the Australian Government has recognised the quality and professionalism of our work in this way.

This higher level of accreditation will bring with it greater responsibility and accountability for our programs and also significantly increased funding for community programs. We look forward to supporting new projects and partners in Nepal as we continue to drive positive change for people in poverty.



BEING CHURCH THROUGH

Monday 8 November 2021 2:45 pm Nepal | 8 pm AEDT

For more information visit:
www.inf.org.au/webinars

INTERNATIONAL NEPAL FELLOWSHIP

www.inf.org.au



WOMEN CHANGING NEPAL

Monday 6 September 2021 3:45 pm Nepal | 8 pm AEST

For more information visit:
www.inf.org.au/webinars

INTERNATIONAL NEPAL FELLOWSHIP

www.inf.org.au

New Staff

During the year we farewelled two staff. Alex Barwick was our part-time Media Advisor, based in Alice Springs, and Steve Barnett was our Australian Programs Manager. We are deeply appreciative of everything they brought to the organisation.

We also took on new staff, partly in hopeful expectation of achieving “Full” accreditation, with the extra obligations associated with that status. Rhianna Jeyakumar and Santosh Nepali [both part-time] have joined as Nepal Programs Officers, working to support and administer our projects in Nepal. Alice Fraser joined as our Relationships and Communications Manager, and Sonja Krivacic joined as Strategic Engagement Manager [part-time], bringing new insights, skills and energy into our ability to engage with supporters in Australia.

We are excited about the new capacities our team has, and eager to seize the opportunities to have even more of an impact through our programs in Nepal and our engagement with the Australian community.



Advocacy

In response to the Delta wave of COVID-19 in Nepal, INF Australia coordinated with Nepali-Australian community, cultural, church and sporting associations, as well as other international aid organisations, to advocate for the Australian Government to provide additional support to Nepal and to use all means to facilitate fair and affordable access to vaccines and COVID-19 treatments for poor nations such as Nepal. Our letter to the Prime Minister was signed by 22 Nepali-Australian organisations and more than a dozen Australian aid and health NGOs.

In response to our advocacy, and of others, the Australian Government provided Nepal with an additional \$7 million in funding to respond to COVID-19. The Trade Minister has recently announced, as well, that Australia will no longer block a proposal within the World Trade Organization which would help speed up and reduce the costs of vaccine production and distribution.

Together we have a powerful voice. INF Australia will continue to work with the Nepali-Australian community, our supporters and other groups who share our heart for justice and generosity to raise our voice. You can find out more about our advocacy efforts at inf.org.au/speak

HOW YOU CAN GET INVOLVED

Join us in the coming year to help bring about life in all its fullness for Nepal's poor and disadvantaged people and communities.

PRAY

Prayer is at the heart of all our work. Visit an INF prayer group, host your own, or sign up online for regular news and prayer updates.

DONATE

Donate to our life-saving and life-transforming work through regular giving, a one-off donation, or by naming INF in your Will. Volunteer your skills, time or talents to raise vital funds [all donations to INF Australia are tax-deductible].

JOIN US

Experience Nepal for yourself on a two-week vision trip or fundraising trek. Use your gifts and skills to contribute to our work by serving short-term or long-term in Nepal.

SHARE

Share our story with your friends, family and colleagues by becoming an INF Ambassador, or State/Regional Representative. Invite one of INF Australia's passionate speakers to inspire and inform your church, school or group, and/or run our experiential activity *Seasons* which simulates life in rural Nepal.

If you'd like to find out more about any of the above, please don't hesitate to contact the INF Australia office at 02 9411 1195 or ausoffice@au.inf.org.

WWW.INF.ORG.AU

FINANCE SNAPSHOT

INF Australia promotes “life in all its fullness” for poor and marginalised people and communities in Nepal through raising prayer and volunteer support and by funding and overseeing healthcare, community empowerment, and disaster resilience programs that benefit people in poverty. We are grateful to all who have contributed towards this work – individuals, families, churches, schools, community groups, businesses and government. Thank you.

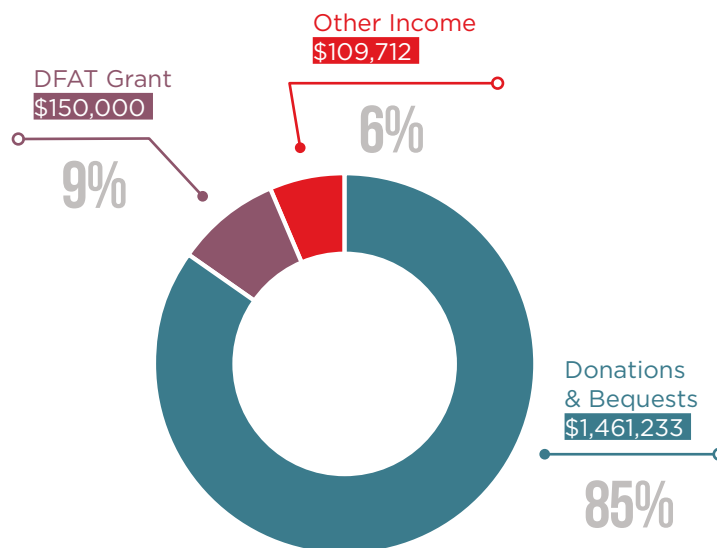
Our accounts for the 2021 financial year show a surplus of \$86,666. Expenditure directly related to our work in Nepal totalled \$910,718 [2020: \$898,043].

Public support through fundraising undertaken by the organisation has remained steady compared with the previous year. Thus, the organisation is operating in a sustainable manner, has been able to maintain all commitments to partners and projects in Nepal, and has also recently made a number of

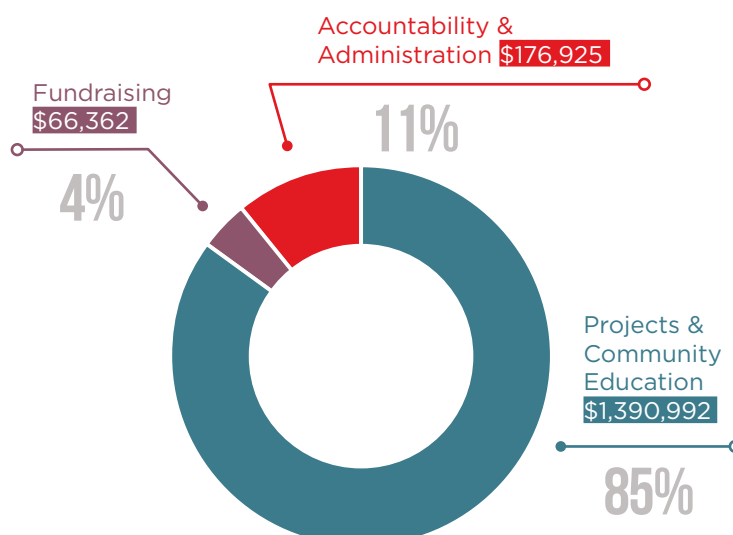
strategic investments in staffing within the Australian office, to enhance the organisation’s capacity for project management and oversight, as well as community engagement and awareness-raising.

These pages provide a simple overview of our finances. More detail follows and our full audited financial report is available online [www.inf.org.au] or on request to the INF Australia office – 02 9411 1195 / ausoffice@au.inf.org.

Source of Income

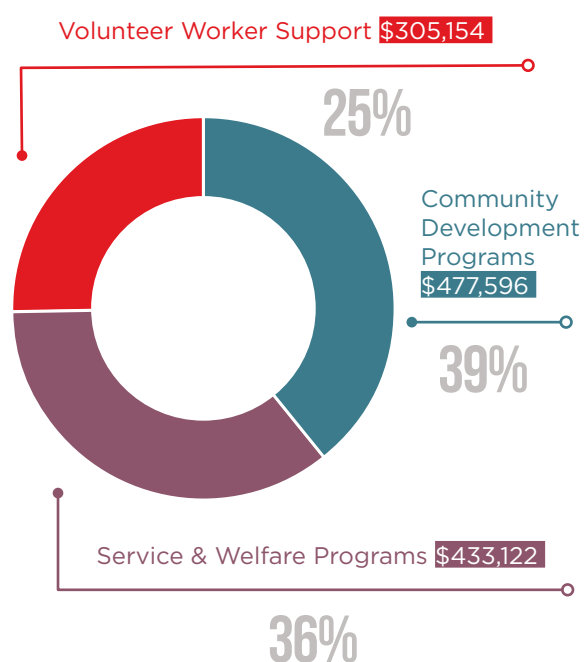


How Funds Were Used



Funds to International Programs

	2021	
Funds to Development Programs	477,596	
Funds to welfare and service programs	433,122	
Non-Monetary Expenditure - Development Programs	140,954	
Non-Monetary Expenditure - Welfare & Service Programs	164,200	
	1,215,872	74%
Program Support Costs	98,997	6%
Community Education	76,123	5%
Total	1,390,992	



Funds invested into healthcare and community empowerment programs run by INF Australia's partners organisations in Nepal and volunteer workers in Nepal supporting their work.

Program Support Costs:

Expenses incurred in overseeing, monitoring and evaluating the programs we support in Nepal to ensure they are effective and sustainable.

Community Education:

Expenses related to awareness raising, advocacy and education about our work in Australia.

Fundraising:

Expenses relating to administering and growing INF Australia's financial support, including the management of donations and government grants.

Accountability and Administration:

Expenses supporting financial management, governance, administration, supporter service, and human resource functions to ensure INF Australia is effective and accountable.

Summary Financial Report 2020-21

The International Nepal Fellowship [Australia] Ltd [ABN 75 090 528 500]

This Financial Report has been derived from the full audited accounts of the International Nepal Fellowship [Australia] Ltd and complies with the ACFID Code of Conduct [www.acfid.asn.au].

For a full copy of our audited financial report, please contact INF Australia via 02 9411 1195 or ausoffice@au.inf.org.

All figures are in AUD [\$].

Statement of Profit or Loss and Other Comprehensive Income For the Year Ended 30 June 2021

REVENUE	2021	2020
Donations and Gifts		
Monetary	897,616	930,250
Non-Monetary	326,510	494,465
Bequests and Legacies	237,107	713,872
Grants		
Department of Foreign Affairs and Trade	150,000	150,000
Interest Income	4,237	8,235
Other Income	105,475	68,172
Total Revenue	1,720,945	2,364,994
EXPENDITURE	2021	2020
International Programs		
Funds to Development Programs	477,596	507,489
Funds to Welfare and Service Programs	433,122	390,555
Program Support Costs	98,997	114,659
Non-Monetary Expenditure - Development Programs	140,954	216,900
Non-Monetary Expenditure - Welfare and Service Programs	164,200	264,051
Community Education	76,123	41,834
Fundraising Costs – Public	56,512	44,135
Fundraising Costs – Government	9,850	5,118
Accountability and Administration	155,569	88,832
Non-Monetary Expenditure	371,450	13,514
Domestic Programs Expenditure	-	51,507
Total International Aid and Development Programs Expenditure	1,748,301	1,937,818
Total Expenditure	1,634,279	1,738,594
Surplus for the Year	86,666	626,401
Other Comprehensive Income	-	-
Total Comprehensive Income for the Year	86,666	626,401

Non-Monetary Gifts and Donations

The work of INF Australia is supported by a large number of volunteers each year. The contributions from volunteers, through regular mail opening, project assistance, general administration etc. mean that INF Australia is able to deliver a great proportion of cash donations directly to field projects. The donated services of specific volunteers have been valued using DFAT guidelines and are recognised in the financial report as “Donations and Gifts – Non-Monetary”.

During the year ended 30 June 2021, 448 volunteer hours were provided to INF Australia at a commercial value of \$21,356.

In addition, INF Australia seeks to demonstrate the value of the non-financial contribution provided by INF Australia’s volunteers in Nepal who serve in technical advisory and training roles. This has been calculated by comparing an estimate of their earning power in Australia to the volunteer allowance they receive in Nepal and is summarised in the table below.

	2021	2020
Non-Financial Contribution in Australia	11,368	13,514
Non-Financial Contribution in Nepal	371,450	480,951
Total	382,818	480,951

Statement of Financial Position

As at 30 June 2021

ASSETS	2021	2020
CURRENT ASSETS		
Cash and Cash Equivalents	1,496,425	1,201,458
Trade and Other Receivables	4,291	16,403
Inventories	1,197	1,720
Other Current Assets	530	12,000
Prepayments	80,883	242,011
Total Current Assets	1,583,326	1,473,592
NON-CURRENT ASSETS		
Property, Plant and Equipment	140,842	1,423
Intangible Assets	16,056	5,850
Total Non-Current Assets	156,898	7,273
Total Assets	1,740,224	1,480,865
LIABILITIES	2021	2020
CURRENT LIABILITIES		
Trade and Other Payables	49,021	3,238
Borrowings	560	-
Lease Liabilities	24,103	-
Employee Benefits	31,403	29,502
Total Current Liabilities	105,087	32,470
NON-CURRENT LIABILITIES		
Lease Liabilities	99,906	-
Employee Benefits	440	-
Total Non-Current Liabilities	100,346	-
Total Liabilities	205,433	32,740
Net Assets	1,534,791	1,448,125

EQUITY	2021	2020
Reserves	1,064,840	1,077,923
Retained earnings	469,951	370,202
Total Equity	1,534,791	1,448,125

Statement of Changes in Equity for the Year Ended 30 June 2021

2021	GENERAL FUND	DESIGNATED FUNDS	TOTAL EQUITY
Balance at 1 July 2020	370,202	1,077,923	1,448,125
Surplus/[Loss] for the year	99,749	[13,083]	86,666
Balance at 30 June 2021	469,951	1,064,840	1,534,791

2020	GENERAL FUND [RESTATED]	DESIGNATED FUNDS [RESTATED]	TOTAL EQUITY
Balance at 1 July 2019	352,913	468,811	821,724
Surplus/[Loss] for the year	17,289	609,112	626,401
Balance at 30 June 2020	370,202	1,077,923	1,448,125

Fundraising Information

The following information is disclosed in accordance with the Charitable Fundraising Act [NSW] 1991. Charitable fundraising license number 17644, expiry 06/12/2024.

Various fundraising activities were conducted during the year including appeals, regular giving and major gifts.

Results of Fundraising Appeals

	2021	2020
Gross proceeds from fundraising appeals	1,134,723	1,644,122
Non-monetary donations and gifts	326,510	494,465
Less: Fundraising costs – Public	[56,512]	[44,135]
Net surplus obtained from fundraising appeals	1,404,721	2,094,452
<i>Fundraising costs / gross fundraising income</i>	4%	2%
Total funds distributed to objectives of the Company [Project costs, program support & community education]	1,390,992	1,586,994
Total expenditure	1,634,279	1,738,593
<i>% of all costs directly incurred in aiding Nepal projects and programmes</i>	85%	91%

Gross proceeds from fundraising appeals for 2021 includes bequests of \$237,107 [2020: \$713,872]

Auditor's **REPORT**

INF Australia's accounts are audited each year to ensure they are accurate and comply with accounting standards. We are grateful to our Auditors, WSC Group, for their service.

The full audit letter can be found in our full audited financial statement and provides that:

1. Our financial report has been prepared in accordance with Division 60 of the Australian Charities and Not for Profits Commission Act 2012, including:
 - giving a true and fair view of the Company's financial position as at 30 June 2021 and of its financial performance and cash flows for the year ended on that date; and
 - complying with Australian Accounting Standards – Reduced Disclosure Requirements [including Australian Accounting Interpretations] and Division 60 of the Australian Charities and Not for Profits Commissions Regulation 2013.
2. The financial reports and associated records have been properly kept in accordance with the Charitable Fundraising Act and its regulations.
3. Monies received as a result of fundraising appeals conducted during the year have been properly accounted for and applied in accordance with the NSW Charitable Fundraising Act and its regulations.

Director's Declaration

In the opinion of the Directors of The International Nepal Fellowship [Australia] Ltd, the financial statements and notes are in accordance with the Australian Charities and Not-for-Profits Commission Act 2012, including the following:

- Giving a true and fair view of the financial position as at 30 June 2021 and of its performance for the financial year ended on that date.
- Complying with Australian Accounting Standards – Reduced Disclosure Requirements [including the Australian Accounting interpretations]; and the Australian Charities and Not-for-Profits Commission Regulation 2013.
- There are reasonable grounds to believe that The International Nepal Fellowship [Australia] Ltd will be able to pay its debts as and when they become due and payable.
- The provisions of the Charitable Fundraising Act 1991 and the conditions attached to the Authority to Fundraise have been complied with.
- Internal Controls exercised by the Organisation are appropriate and effective in accounting for all income received and applied from any fundraising appeals.

Signed in accordance with subsection 60.15[2] of the Australian Charities and Not for Profits Commission Regulation 2013. On behalf of the Board,



Ravi Underwood
St Leonards
4 October 2021

GOVERNANCE & LEADERSHIP

STAFF LEADERSHIP TEAM

Ben Thurley – CEO

Russ Hancock – Nepal Programs Manager

Roger Thompson – Finance Manager

Sonja Krivacic – Strategic Engagement Manager

BOARD

Ravi Underwood

CPA, MBA, Masters of Taxation, Bachelor of Economics

Appointed to Board: 2018

Responsibilities: Board Chair / Finance and Risk Committee

Attended: 5/5

Ravi Underwood has a strong finance background as CFO of several listed and large companies in Australia. Ravi was first involved with INF in 2007 and was a director of the INF Board from 2007 to 2013. Ravi returned to the Board in 2018 and has been Board Chair since 2019.

William Hood

BSc [Hons], DipEd, MLib PhD GradCert [IS], DBS

Appointed to Board: 2017

Responsibilities: Deputy Chair / Policy Review Committee

Attended: 5/5

William Hood was born in India where his parents, Donald and Patricia were missionaries with CMS [Donald was also a former Chairman of INF Australia]. He has worked as a high school Maths teacher, school librarian, lecturer in Information Systems at UNSW, Parish Administrator and is currently the Manager of Library and Information Services at Moore Theological College. He has been on the Board of INF Australia since 2017 and Deputy Chair since 2019.

Matthew Johnson

Bachelor of Business, CA

Appointed to Board: 2016

Responsibilities: Treasurer

Attended: 3/3 [Resigned from Board in March 2021]

An accountant and Member of Chartered Accountants Australia and New Zealand, Matt is currently employed as the Head of Finance at Sentral, a School Management Systems for schools throughout Australia and NZ. Prior to Sentral, he worked as a management consultant and financial auditor within the financial services industry.

Rudra Paudel

Bachelor of Journalism, MBA

Appointed to Board: 2016

Responsibilities: Fundraising Committee

Attended: 5/5

Based with his family in South-Western Sydney, Rudra has been a member of the INF Australia Board since 2016. He has been the owner-manager of an Australian franchise business for ten years, prior to which he was involved in other levels of management within the business. He is a trained journalist, and serves as an Elder in United Nepali Christian Church.

Richard Groves

BA [Hons], CA

Appointed to Board: 2013

Responsibilities: Finance and Risk Committee

Attended: 4/5

Richard is currently the Chief Risk Officer for volt bank, an Australian financial institution and has twenty years experience in risk management in banking. He is a qualified accountant with more than five years experience in financial control and audit, as has consulted extensively in areas relating to governance, risk and compliance.

Kate Clark

MBBS, Dip TM

Appointed to Board: 2017

Responsibilities: Nepal Programs Committee, Gender Focal Person

Attended: 5/5

Kate Clark is a General Practitioner specialising in travel medicine. A long-time supporter of INF Australia, she has been on the board since 2017. She has been on multiple trips to Nepal, including leading two fundraising treks.

Kerrie Worboys

MA Applied Anthropology and Development Studies

Appointed to Board: 2012

Responsibilities: Nepal Programs Committee

Attended: 5/5

Kerrie Worboys served in Nepal as a pharmacist, administrator and publicity officer for 24 years, settling home in Sydney from 1995. After a short while working for CMS/NSW in publications, she started to run the part time office of INF Australia, retiring in 2011. A Masters in Applied Anthropology and Development Studies from Macquarie University gave her the insights on international development necessary to successfully obtain Tax Deductibility for INF Nepal's development projects. Currently she is doing a PhD on the early Egyptian Church, which helps to keep her mind sharp for service on the INF Australia Board and a sub-committee.

Richard Reeve

CPA, FCPA, Bachelor of Theology, Grad Dip in Further Education and Training, Bachelor of Business in Accounting

Appointed to Board: 2019

Responsibilities: Finance and Risk Committee

Attended: 5/5

Richard Reeve is a Ministry Leader with Fresh Hope, the Churches of Christ in NSW and ACT. He is a qualified accountant [FCPA] and holds a Bachelor of Theology. He and his family served with INF in Nepal from 2001 until 2006.

Special Thanks to Matt Johnson

The Board and Staff of INF Australia pay a special thanks to Matt Johnson who served as Honorary Treasurer for INF Australia from November 2015 until March 2021. Above and beyond his role on the Board, Matt contributed countless hours as Treasurer to ensure our monthly, quarterly and annual financial reports were clear and accurate.

With a growing family, this time commitment was no longer feasible and Matt resigned from the Board in March 2021. We are grateful that Matt has been able to pass on the baton to INF Australia's new Finance Manager, who takes on much of the role played by Matt and our previous Treasurers. We are so deeply grateful for Matt's dedication, his skills and his personable and insightful engagement on the Board.

Nicola McGunnigle

BSc, MSc [Hons]

Appointed to Board: 2017

Responsibilities: Policy Review Committee,

Environment Focal Person

Attended: 5/5

Nicola is an Environmental Scientist currently undertaking PhD research at the University of Adelaide looking at sustainable livelihood benefits from reforestation in the middle hills of Nepal. A long-serving member of INF, Nicola and her family served with INF in Nepal in 2015-2016 and she continues to be the INF representative in South Australia.

Feedback & Complaints

We welcome feedback on work. Please email ausoffice@au.inf.org or visit <https://inf.org.au/complaints> to register a concern or feedback or find out more about.

We are a signatory to the ACFID Code of Conduct and take seriously our responsibility to maintain the highest standards of professionalism, effectiveness and accountability. Please visit <https://acfid.asn.au/code-of-conduct> to find out more about the Code.

INF FAMILY & PARTNERSHIPS

INF is an interdependent, worldwide family of Christian organisations with a common vision of “life in all its fullness for Nepal’s poor and disadvantaged people and communities”.

Here is an overview of the INF family.

INF NEPAL

Our main implementing partner in Nepal, based in Pokhara. INF Nepal employs over three hundred Nepali staff and several expatriate volunteers and is led by Executive Director, Krishna Adhikari.

As well as providing direct financial support for some of INF Nepal’s hospitals and community projects, as well as COVID-19 response, we continue continued to support the strengthening of INF’s capacity and resources through training, support for project monitoring and evaluation, funding of some key technical roles and, of course, through the contribution of our volunteer workers serving in advisory and support roles within INF. We also provided funding for their Communications Team, who provide communications services for the INF family.

INF INTERNATIONAL

With a small office in Kathmandu, INF I facilitates the recruitment and care of expatriate workers, the international transfer of funds to INF Nepal, and contributes leadership services to the INF family. It is registered in Australia. INF Australia provides Company Secretary and bank account management services to INFI. During 2020–21, the Nepal Country Director was Phil Morris, former CEO of INF Australia.

INF AUSTRALIA

INF Australia supports a small number of highly skilled partner organisations in Nepal as they contribute healthcare services and work towards community empowerment among poor and marginalised people. We engage with individual supporters, churches, schools and with the Nepali-Australian community to raise awareness, financial and other support, and to advocate for and with our partners in Nepal and the communities they support.

INF NEW ZEALAND

INF NZ raises awareness of INF’s work in Nepal and primarily seeks to identify and support volunteers to serve in Nepal.

INF CANADA

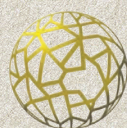
INF Canada have a volunteer Board and raise prayer & financial support for INF’s work in Nepal.

INF UK

INF UK are a strong and active member of the INF family, encouraging prayer and raising funds to support INF’s work in Nepal.



INF Australia is accredited by the Department of Foreign Affairs and Trade [DFAT], responsible for managing the Australian Government’s aid program. We receive support through the Australian NGO Cooperation Program [ANCP].



ACFID
MEMBER

INF Australia is a member of the Australian Council for International Development, the peak body for Australian charities involved in international development, and a signatory to their Code of Conduct.



INF Australia is also a member of Missions Interlink, a network of Australian Christian agencies actively engaged together in effective cross-cultural and global mission.



Life
in all
its
Fullness



INTERNATIONAL NEPAL
FELLOWSHIP AUSTRALIA

INF AUSTRALIA

PO Box 708
Crows Nest
NSW 1585
T +[02] 9411 1195
E ausoffice@au.inf.org
ABN 75 090 528 500

WWW.INF.ORG.AU

WWW.INF.ORG.AU/FACEBOOK

WWW.INF.ORG.AU/TWITTER

WWW.INF.ORG.AU/INSTAGRAM

WWW.INF.ORG.AU/YOUTUBE