



# ANNUAL REPORT

2022-23





I have come that they may  
have life and have it to the full.

**JOHN 10:10** NIV

Woman from Nepalgunj Banke district.

Photo: INF Australia



# Our vision

Life in all its fullness for Nepal's poor and marginalised people and communities.

## WHO IS INF AUSTRALIA

INF Australia supports individuals and communities in Nepal to access the resources and training they need to improve their lives. We work across all religions, backgrounds and ages to provide support for the most disadvantaged groups in the country. We are part of an international family working in partnership with International Nepal Fellowship and a small number of other organisations.

## OUR AREAS OF FOCUS

### Community Empowerment

Livelihood development, empowerment among women, young people and people with disabilities.

### Health & Disability

Physical, social, spiritual and mental care.

### Disaster & Climate

Emergency response, risk mitigation and adaptation programs.

## OUR MISSION

To share and support our partners' demonstration of God's love through medical programs, disaster response, community development and climate change adaptation with poor and marginalised people in Nepal.

## OUR VALUES

We affirm and live by the INF family's shared values:

- Love प्रेम
- Service सेवा
- Integrity सत्यनिष्ठा
- Excellence उत्कृष्टता

We are an organisation of faith. We strive for humility. We are committed to justice. It's because of this we value:

- Faith in action
- Priority for people in poverty
- Teamwork, collaboration and partnership
- Integrity and accountability
- Learning and innovation



Gajendra (on the left) in his wheat field,  
Bajura District.

Photo: INF Australia



# CONTENTS

Chair and CEO's Reports .....	4
Health & Disability .....	6
Community Development .....	10
Disaster Response & Climate .....	14
Our Work .....	16
Our People .....	18





How you can be involved ..... 19

Finance Snapshot ..... 20

Detailed Financials ..... 22

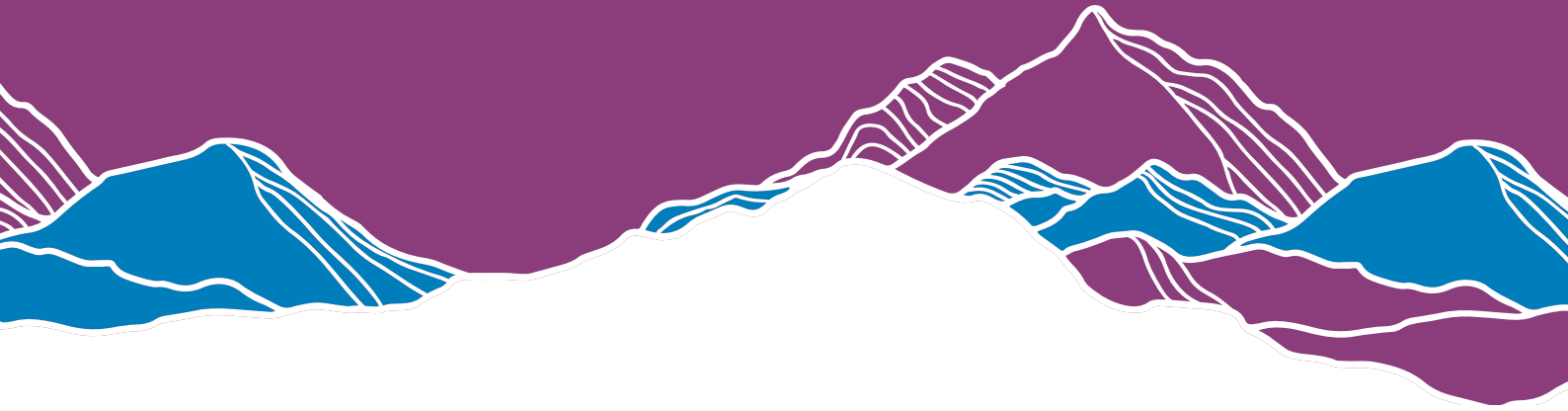
Governance ..... 24

Family & Partnership ..... 25

All Scripture quotations, unless otherwise indicated, are taken from the Holy Bible, New International Version®, NIV®. Copyright ©1973, 1978, 1984, 2011 by Biblica, Inc.™ Used by permission of Zondervan. All rights reserved worldwide. [www.zondervan.com](http://www.zondervan.com) The “NIV” and “New International Version” are trademarks registered in the United States Patent and Trademark Office by Biblica, Inc.™

Names used in stories have been changed to preserve anonymity.





## CEO REPORT

In November 2022, I was privileged to attend and represent INF Australia at the 70-year anniversary celebrations. It was wonderful to be joined with many generations of INF workers and supporters to thank God for his faithfulness over many years and to bear witness to the changed lives and improved living conditions for many people who have been served.

The old 'Shining Hospital' building had been moved down from Simpani to the Green Pastures site as a reminder of where INF's journey all began. One of the displays that caught my attention was the 'Pioneers of INF', showcasing the many women who contributed and led the way for INF, including Australia's own Kerrie Worboys.

This legacy of 'Shining Hospital' lives on as the name of the INF hospitals in Banke and Surkhet, where INF Nepal continues to provide health and disability services, including the treatment of leprosy.

Since it began in 1952, INF has been working to eradicate leprosy and rehabilitate those affected by the disease. In 2023 INF Nepal developed a zero-leprosy strategy to run through to 2030 and INF Australia will be providing financial support to enable early detection and education and awareness through community outreach programs.

With the assistance of ANCP and INF Australia supporters, community development and empowerment in remote places is making ongoing improvements to the lives of many who have been disempowered, disadvantaged and discriminated against. Through the work of INF and its partners we continue to see amazing transformation and empowerment for women and children through self-help groups; overcoming gender-



based violence initiatives; agriculture and livelihood programs; and training in clean water and sanitation.

In the Australian office, we would like to thank Russell Hancock for his many years of service as the Nepal Programs manager. Santosh Nepali has now taken over this role with the support of Neriyes Chhetri. INF Australia is strengthening its connections with Nepali churches in Sydney and is seeking to explore similar connections and partnerships with Nepali churches in other states.

This year, INF Australia launched a new website with new branding, but with the same vision, mission and purpose to bring life in all its fullness to the people of Nepal. I would like to thank our members, supporters and donors for their ongoing commitment and dedication. The work that began over 70 years ago continues as INF Australia provides vital funding and support to INF Nepal and its partners.

**Richard Reeve, CEO**

Above: the original Shining Hospital building in its new location.

Photo: Richard Reeve





## BOARD CHAIR REPORT

INF Australia has demonstrated resilience, recovering well from the impacts of COVID-19 and related lockdowns, and continuing to fulfil all its financial commitments to INF Nepal and other partners, sending more funds to Nepal than it has done previously.

INF Australia maintained its commitment to support health and community development programs through its partners in Nepal, primarily through INF Nepal through the support of the Department of Foreign Affairs and Trade (DFAT); the generous support of many donors; and through the utilisation of designated program funding reserves.

The reported result for the financial year ending 30 June 2023 was a deficit of \$186,370. The Board acknowledges that this is the second consecutive year reporting a significant deficit result. This deficit was necessary to fulfil the financial commitments to INF's programs in Nepal, several of which were in their final year of operations and were funded from surplus designated project reserves. It is anticipated that INF Australia will record a break-even result in the 2023-24 financial year. This will be aided by the creation of a new reserves policy that ensures all project funding is matched by donor income streams.

A priority for INF Australia is the strengthening of partner organisation capacity and over this last year, INF Australia has co-funded with INFUK, the appointment of the Director of Community Development for INF Nepal, Sean Sokhi, who has added significant technical expertise to INF Nepal's leadership team. INF Australia continues to fund the gender office and financial support for INF Nepal's communications team.

During this last year, INF Australia has been blessed with the appointment of Stephanie Cole as Company Secretary. Stephanie has brought a legal skillset to our team and has greatly improved our compliance and reporting.

This year, we are sad to see several staff leave. Firstly, Russell Hancock retired as Programs Manager, and we would like to thank Russell for over 25 years of both voluntary and paid service to INF in Nepal and in Australia. We also thank Russell for investing in and training Santosh Nepali who now replaces him as Programs Manager. In September 2023 we said goodbye to Ben Thurley after 5 years as CEO and we thank Ben for his passion and dedication to advocate for the people of Nepal. And finally, we farewelled Cath Taylor who resigned as Communications Manager. INF Australia has since appointed Richard Reeve from the board to the role of CEO and has engaged Wild Hive Studios to manage the communication and marketing needs of INF Australia.

I would like to thank my fellow board members for their commitment to serve, not only on the board, but also on the various sub-committees of Finance & Risk, Policy Review, and Projects Monitoring.

I am thankful for our prayer supporters, generous donors and volunteers and supporters who give so much to ensure the work of INF Australia continues. We remain thankful to God, for his faithfulness and many blessings over INF's work.

**Ravi Underwood, Board Chair**



## OUR WORK

# Health & Disability



3

partners



115,616

participants



4

projects

Health and Disability projects form part of the Service and Welfare work of INF Australia, providing holistic physical, psychological, spiritual and social care and preventing disability among Nepal's most disadvantaged people.

## What we've achieved this year

### Health Care and Disability Support

- 2,160 Assistive Devices including hearing aids, clubfoot cases, wheel chairs, prostheses and orthoses provided to persons with disabilities.
- 33,408 patients received dermatology and leprosy services including tests, septic and reconstructive surgery.
- 956 individuals were supported with medicines, tests, travel and referral services.
- 430 patients benefited from the Uterus Prolapse Camp, including screening and surgery.
- Accommodation, food and health care provided to three elderly leprosy patients who were abandoned by their families.





## Infrastructure and Equipment

- 19 Health Posts and Primary Health Care Outreach Centers were supported with medical equipment.
- Birthing Center established, together with the required medical equipment to support it.
- Capacity-building and equipment support for 16 Health Facility Operation Management Committees.
- Renovation of the Ananda Niwas Unit of Green Pastures Hospital.

## Training and Counselling Services

- 1,655 people directly benefited from Pastoral Care and Mental Health Counselling services.
- 112 counsellors were trained and benefited from supervision support.
- 2,404 individuals were supported with advocacy and referral services.
- 22,118 physiotherapy, occupational therapy and speech and language therapy sessions were conducted.
- 3,432 people were provided with training on reproductive health, HIV/AIDS, sexually transmitted diseases, and other health issues.
- Conducted workshops and interactions with the staff and relevant stakeholders regarding Zero Leprosy Strategy of INF Nepal.





## AN ACTIVE LIFE AFTER SPINAL INJURY

The day Prapti (pictured above) climbed a tree to collect fodder for her goats, she was already busy. As a 36-year-old wife, farmer, mother of three children and a support person for her mother-in-law, normal life was challenging.

It became much harder when she fell from the tree, and broke her spine.

Suddenly paraplegic, Prapti needed assistance even to bathe and toilet herself. Huge loans for medical bills spiralled into a debt crisis. Even if she had been able to afford a wheelchair, her home was not set up for one: the ground was uneven, her room was inaccessible. The family's future looked bleak.

Hope came from the Access and Inclusion Project. An occupational therapist assessed Prapti's needs, discussed solutions, and their home was modified to include a wheelchair-friendly kitchen and living room, an indoor toilet and a water tank.

The financial support of the project and her family's physical labour changed Prapti's life.

Able to resume her role in running the household, Prapti is not only able to help her family practically, but has purpose and focus. She knows her daily work holds great value, especially for those she loves. For this ease and happiness she is deeply grateful to INF supporters.

Over half of Prapti's medical bills remain unpaid, but Prapti's contribution to the family enables her husband to work as a labourer, gradually earning enough to pay this off and support their children as they grow.

## FREEDOM FROM FISTULA

35-year-old Reeya (opposite) embodies the resilience of so many Nepali women.

Slender, small and bright-eyed, Reeya grew up illiterate, in a rural family so poor they gave her up to be married when she was just 15. Reeya's first baby arrived within a year, born in her home. Reeya experienced a birth injury – a fistula – so damaging that she struggled to digest food or remain continent for almost two decades afterwards.

The pain was terrible, and she was told there was no cure. An odour clung to her, and she isolated herself from others out of shame. She says, "I sometimes slept in the cowshed, or near the toilet, because of my frequent need to use it."

Reeya persevered in the face of all this. She bore seven children, and continued to run their household, herd livestock, farm the land and care for her family.

After 18 long years, INF started a Health Mother Group nearby, and Reeya heard her symptoms described in discussions of child marriage, reproductive health and gender-related issues. Quietly, away from the group, she raised her experiences with INF staff – and a pathway to freedom and health opened up.

INF provided support, advice, counselling and follow up. And in May 2022 Reeya received treatment at Surkhet Fistula Centre.

"From that day forward, I was relieved from the pain and problems I had suffered. INF Nepal was like a blessing, giving me new hope in life. I can participate in social gatherings... It was like I regained my life, but stronger, smarter and more powerful."



## DR HEYWOOD HONOURED

Gynecologist and surgeon Dr Shirley Heywood who has a strong connection with South Australia has been honoured with the Swasthya Khabar Health Award for her contribution to Nepal's health sector, leading INF's fistula work in Karnali province.

Thanks to Dr Shirley's efforts, a 17-bed Fistula Centre in Surkhet treats hundreds of women annually, curing this debilitating condition.





“It was like I regained my life, but stronger, smarter and more powerful.”



## OUR WORK

# Community Development



**5**  
partners



**30,000**  
participants



**12**  
projects

Our community development projects focus on enabling communities in remote and disadvantaged areas through sharing resources and training to improve their life and experience life in its fullness.

## What we've achieved this year

### Agriculture and Livelihood

- 28,409 project participants in 370 Self Help Groups. 80% of the project participants are female.
- 1,848 poor and marginalised people received seed funds, material and livelihood support.
- 4 cooperatives formed to sustain long term livelihood and agricultural activities.
- Self Help Group members and their families received vocational training including plumbing, motorbike repair, sewing, carpentry and hair salon training.
- 1,820 project participants have started communal farming, off-season farming, kitchen gardens and high value crop production.

### Empowerment of Women and Young People

- 115 women are in leadership positions in different decision-making forums including the municipalities and rural municipalities.
- Human Right Defenders and Gender Focal Persons are trained in leadership and are organised in gender networks at ward, municipality and provincial level.
- In Kailali 99.38% of children are attending school and 100% of local wards and municipalities have Child Protection Committees in our project areas.
- 2,031 children and adolescents were trained to raise awareness on child marriage, drug abuse and menstruation taboos.





## Clean Water and Sanitation

- 1,146 households have a hand washing station and utensil dryer.
- 3 small scale drinking water systems and 442 taps were constructed to ensure clean drinking water supply in the community.
- 1,138 students from seven schools are using clean water after the construction of new tanks and collection centres.
- Three villages were declared 'Model Clean Villages'.

## Overcoming Gender Based Violence and Discrimination

- 51 gender-based violence cases were identified and survivors were provided with referral, legal and counselling support.
- 1,209 Human Right Defenders and Gender Focal Persons were trained on Gender Based Violence Case Management.

### Our project partners are:

Our primary partner INF Nepal and other partners including Welfare Association for Children Tikapur (WACT), Shanti Nepal, Mahila Milijuli and Milap.

*INF Australia acknowledges the support of the Australian Government through the Australian NGO Cooperation Program [ANCP] for its Community Health & Development (CHD) and POWER (Promotion of Women Empowerment and Rights Targeting Rural Women) programs.*



## ENDING THE SILENT SUFFERING OF FAMILY VIOLENCE

INF's belief that Nepalis should nominate the projects most important to them has resulted in priceless work being done to protect women from family violence.

Gender-based violence is endemic in the country, grounded in deep-seated attitudes and a lack of education and empowerment for women in general.

People like Simrika (pictured below) are rising up with great courage to address this and support their countrywomen.

Simrika's goal is to end the silent suffering. She has become a Women Human Rights Defender (WHRD), receiving training in the POWER Project (Promotion of Women Empowerment and Rights Targeting Rural Women). She runs group sessions in communities helping others understand how women's safety can be improved. She campaigns hard to raise awareness of existing laws and policies amongst everyday people and elected representatives.

At times, Simrika personally advocates for perpetrators to be held accountable, and progress is showing.

In just six months, Simrika and other women's rights defenders have resolved five cases of violence against women in their community, with two cases referred to the judicial committee.

Her success is attributed to close coordination with local authorities, the police, women, and human rights defenders, with strong support from the community and stakeholders.

As a Women's Human Rights Defender, Simrika's confidence has grown, and she is deeply proud of her work. She expresses gratitude to INF Nepal for empowering her and her community to combat this toxic issue.



## SELF HELP GROUP GIVES PRAKASH A FUTURE

In a tiny village in mid-west Nepal, where the mercury stays in single digits most of the year, a young man in a T-shirt is working up a sweat.

Prasad, a 27-year-old Nepali, (pictured above) has responded to the losses in his life with the same hard work and determination he now brings to the building site.

After losing both parents as a child Prasad faced grim circumstances and an uphill battle to stay in school. He somehow held on and made it all the way through to Year 12.

After leaving school Prasad married and became a labourer, but the poverty of his village meant that he was often paid in goods or food, not cash. Prasad moved in with his in-laws. His dream – a home he could build for his own family – seemed impossibly out of reach.

Then, in 2018, INF Nepal began Self Help Groups in his village – and another dream he had nursed, of becoming a carpenter, was mentioned to the team by family.

Seeing Prasad's need, enthusiasm and work ethic, INF sponsored three months of carpentry training and gave him tools. He set up shop as the only village carpenter, and quickly established an excellent reputation.

Before long, word spread to neighbouring villages and the business began to thrive. Soon Prasad was investing in more advanced tools, and by the time he was in his mid-twenties he was able to build his family a home of their own.

These days Prasad's wife also participates in Self Help Groups, and the chippie himself aims to mentor others in carpentry.

He is thankful to INF Nepal and its partners for providing this life-changing opportunity: "I love this work, and I'm grateful for helping make my dream come true."





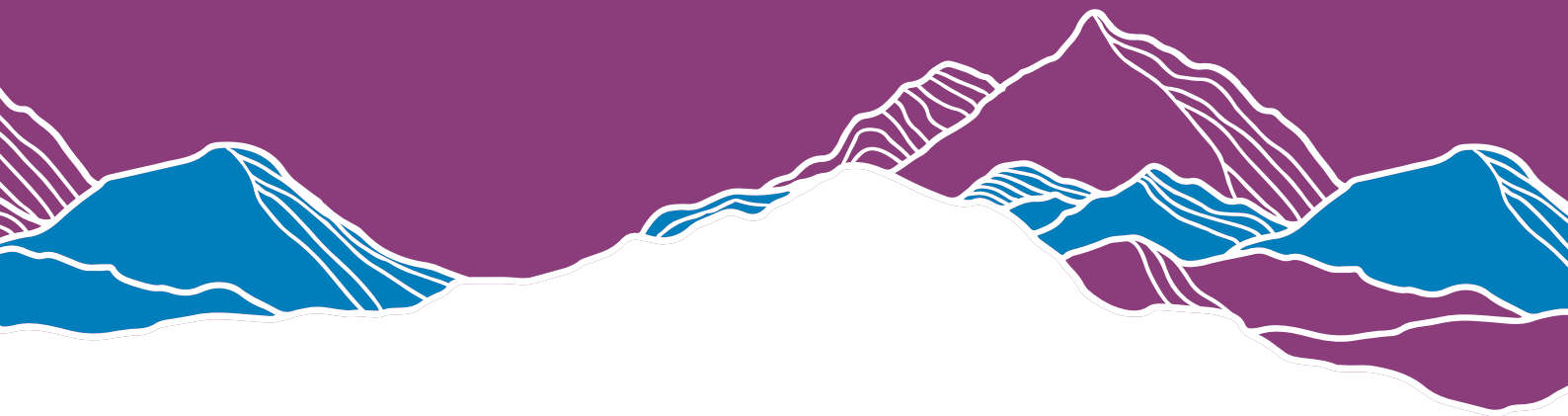




## OUR WORK

# Disaster Response & Climate

Nepal is one of the countries most vulnerable to climate change and disasters. Already a land of intense extremes, many people live in fragile homes that cling to steep slopes, on hostile terrain that's increasingly prone to floods, mudslides, snowstorms, earthquakes and even fire, with minimal infrastructure to fall back on when disasters hit. INF Australia supports partners to respond to immediate disasters as well as help communities adapt to changing climate and plan for the future.



## What we've achieved this year

### Training and Policy Development

- 754 individuals trained on improving climate-resilient agriculture.
- Supported the local government and Self Help Groups in the development of hazard maps, action plans for climate change and disaster risk reduction.



Opposite: Flood response in Banke/Bardiya.  
Photo: Milap





## Disaster Response and Climate Change

- As part of flood relief in Banke, Bardiya and Koshi province, 683 households were supported with immediate relief materials (food, hygiene kits, warm clothes) and 300 pregnant women or new mothers received health and nutrition packs.
- 8 schools in Dang, Nepalgunj, Kailali and Kanchanpur affected by flood were supplied with carpeting, furniture and educational materials.
- 9 households completely burned down in a fire outbreak were supported with tin roofing sheets, hygiene kits, bedding and clothes.
- In Bajura, 1,800 households have installed smokeless stoves leading to the improved health of family members.





# Our work

INF Australia's supported projects and workers in Nepal

We supported INF Nepal's **Climate Change Adaptation and Livelihoods Project** in Bajura to improve adaptive capacity of people depending on agro-based livelihoods to cope with climate change and extreme weather.

We supported INF Nepal's **Women's Empowerment and Livelihoods [WEAL] Project**, which works with Self Help Groups to improve health and livelihoods for the whole community.

We supported INF Nepal's **Empowering Women and Girls through WASH (Water, Sanitation and Hygiene) and Livelihoods Project** to support their health and hygiene and strengthen livelihoods in Kalikot.

In Kailali, we supported WACT (Welfare Association for Children Tikapur) to carry out two projects, **CONECT [Community Organisation Networking and Collaboration for Transformation]** to facilitate a process of empowerment to enable people to sustainably respond to their and community's development needs and **ICAWCP [Improving Child and Adolescent Wellbeing Through Community Partnership]** to improve the wellbeing of children and adolescents by engaging with children, parents/caregivers, schools, CBOs (Community Based Organisations) and local government.

We also supported a **Climate Change Pilot Project** supplementing and expanding existing climate change related and disaster risk reduction activities.

We partnered with three smaller organisations – **Milap, Mahila Milijuli, and Sarwagin Sewa Samaj** – to support women's empowerment and livelihoods, and to advocate for and support disadvantaged patients in the regional hospital.



INF Australia continues to support the health and medical work of INF Nepal through the work of **Shining Hospital Surkhet, The Fistula Centre Surkhet, Shining Hospital Banke, and Green Pastures Hospital** in Kaski.

## SUSTAINABLE DEVELOPMENT GOALS

Our work contributes to the Sustainable Development Goals – the global blueprint for a better and more sustainable future for all.





In West Rukum, we supported Shanti Nepal's **Community Transformation Project** to support their efforts for holistic transformation of community through WASH (Water, Sanitation and Hygiene), community health and livelihoods.

We supported INF Nepal's **EDUCATE Project** in Rolpa, supporting women's Self Help Groups improving access to rights and sustainable livelihoods.

We also supported a **Climate Change Pilot Project** supplementing and expanding existing climate change related and disaster risk reduction activities.

In Kapilvastu, we supported INF Nepal's **Climate Change Pilot Project**, supplementing and expanding existing climate change related and disaster risk reduction activities.



We supported **Yuek Ming Poon**, from Hong Kong, who is serving as INF Nepal's Leprosy Advisor, based in Pokhara.



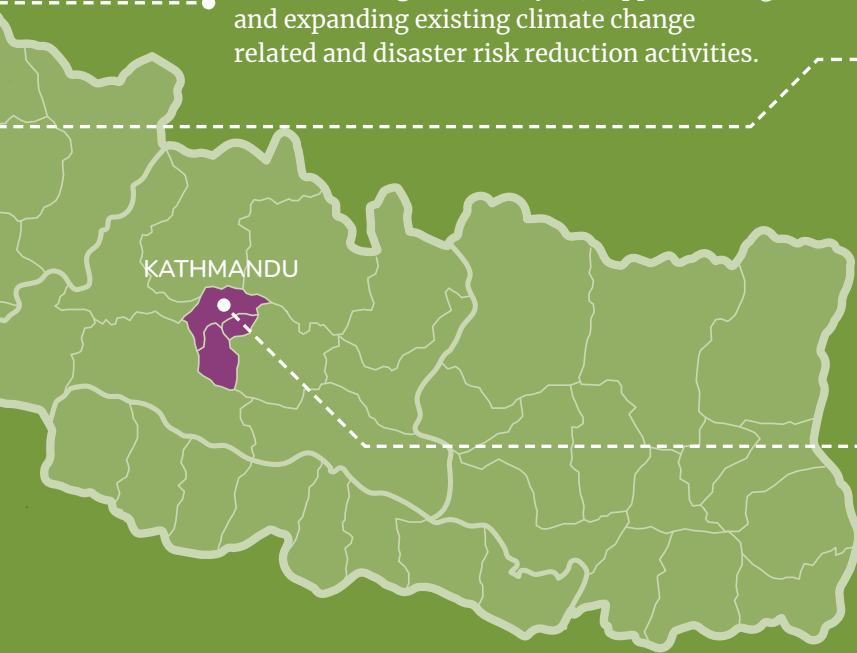
We supported **Peter and Caryn Kneale**. Caryn is currently working as a Nutrition Advisor at INF Nepal and Peter is working as teacher at Pokhara Study Center.

We supported the development of INF Nepal's **Integrated Leprosy Strategy**, as well as providing shelter, food and medication for three leprosy patients abandoned by their families.

We provided funding for INF Nepal's **Communications Team** in Pokhara.

We supported **Elijah Counselling Training Centre [ECTC]** based in Lalitpur to help build a community of psychologically and socially stable people by providing quality counselling, counselling training services, and the strengthening of human resources.

We supported the **INF International [INF I] Office** in Kathmandu to coordinate transfer of funds internationally, support expatriate advisors and liaise with the Government of Nepal.





# Our people

## IN AUSTRALIA



### Richard Reeve, CEO

A member of the INF Australia Board for five years, Richard has recently been appointed to the role of CEO. Richard and his family served with INF in Nepal from 2001 to 2006.

*“I’ve loved Nepal, the mountains, the people and INF since the first time I arrived and it’s now a privilege to be able to serve in the team.”*



### Roger Thompson

Roger is a Chartered Accountant with a BA Commerce and over 30 years relevant experience. Roger has been Finance Manager since 2020.

*“It’s rewarding to work closely with staff, donors and supporters, who are committed to assisting groups and communities in Nepal.”*



### Santosh Nepali

Santosh is a Nepal Programs Manager and has work experience in project management, leadership and cross-cultural awareness training. He joined INF in 2021.

*“I always wanted to serve the people in Nepal who are poor and marginalised. It’s an absolute pleasure to work with the passion-driven, professional team of INFA.”*



### Neriyes Chhetri

After an internship with INF Australia as part of her Bachelor in Social Science (Community service) Neriyes joined the projects team.

*“It’s amazing to see the love INF Australia’s team has for Nepal. Serving people in need has always been my passion. It is such a privilege to do the work that I am passionate about.”*



### Mervyn Walsh

Merv is our Office and Supporter Engagement Coordinator. He has high-level senior management experience and began with INF to invest in an area of great personal value.

*“I am happy to be engaged in good words prepared in advance for me to do (Eph 2:10).”*



### Peggy Franks

Peggy has served extensively in Nepal and now provides professional and pastoral support to coach, mentor and expatriate volunteers serving cross-culturally.

*“I love it that INF values and appreciates the gifts and talents that volunteers bring to the organisation.”*



### Stephanie Cole

Stephanie is an experienced solicitor and holds a Masters degree in law. Stephanie serves as the Company Secretary for INF Australia.

*“God opened the door for me, when I least expected it in 2022, to work with INF Australia- it has been a blessing and privilege to serve God in this way. Life is never dull with INFA!”*



## IN NEPAL



### Yuek Ming Poon

Ming lives in Pokhara and is serving as INF Nepal's Leprosy Advisor. She works with nursing, clinical and administrative staff to provide training, guidance and support. She gives high-quality care to patients with leprosy.



### Caryn and Peter Kneale

Caryn and Peter live in Pokhara where Caryn serves as a nutritionist in the Community Development team. Currently Caryn is placed as an advisor in the Chronic disease and Palliative Care unit within Green Pastures Hospital. Peter is serving as a teacher with the Primary Study Centre (PSC).

## How you can be involved



### Share the stories

Telling the story of Nepali culture, strength and needs is another great way to support local communities. Follow us on Facebook, Instagram, LinkedIn and our website for good news stories of lives being changed.



### Pray

Like-minded groups of praying people around the country meet regularly and uphold our partners in prayer. Visit us at [inf.org.au/pray](http://inf.org.au/pray) to find a group near you, and sign up to receive Prayer Notes to guide your own prayer.



### Learn

Invite a speaker to your church, school or group. Run our experiential activity, Seasons, which simulates life in rural Nepal. Please check out our resources at [inf.org.au/seasons](http://inf.org.au/seasons)



### Donate

Your regular generosity makes an incredible difference. We are so grateful for the regular donors who financially support INF's life-changing work, as well as those who make one-off donations or bequests. Your gifts represent immense love and goodwill. All gifts are tax deductible. Contact [inf.org.au/donate](http://inf.org.au/donate) or call us on 02 9411 1195.



### Volunteer

We have a range of volunteer roles, both in our Sydney office and remotely. If you're interested in lending your skills, visit us at [inf.org.au/volunteer](http://inf.org.au/volunteer). We also recruit a limited number of highly skilled professionals in response to the needs of our partners. Contact us at [ausoffice@au.inf.org](mailto:ausoffice@au.inf.org) to learn more.



### Advocate

We work with Nepalese Australians to speak up about aid and other issues that make a big difference to our friends in Nepal. Visit us at [inf.org.au/speak](http://inf.org.au/speak).



### Visit

Get to Nepal. We organise trips to visit our partners and to experience Nepal. Visit us at [inf.org.au/trips](http://inf.org.au/trips)



# Financial summary

INF Australia is extremely grateful to all who have contributed to this work, through prayer, volunteer support and financial generosity – individuals, families, churches, schools, community groups, businesses, and government. With the financial resources provided, INF Australia has been able to fund healthcare, community empowerment and disaster resilience programs which benefit people living in poverty, to bring transformation for poor and marginalised communities in Nepal so that they may be able to live in all its fulness.

The accounts for the 2023 financial year report a deficit of \$186,370. This loss was necessary to maintain funding commitments to partners in Nepal and was funded from designated reserves. INF Australia has

a healthy Balance Sheet and manages its reserves carefully to ensure continuity in project funding when the timing of income varies.

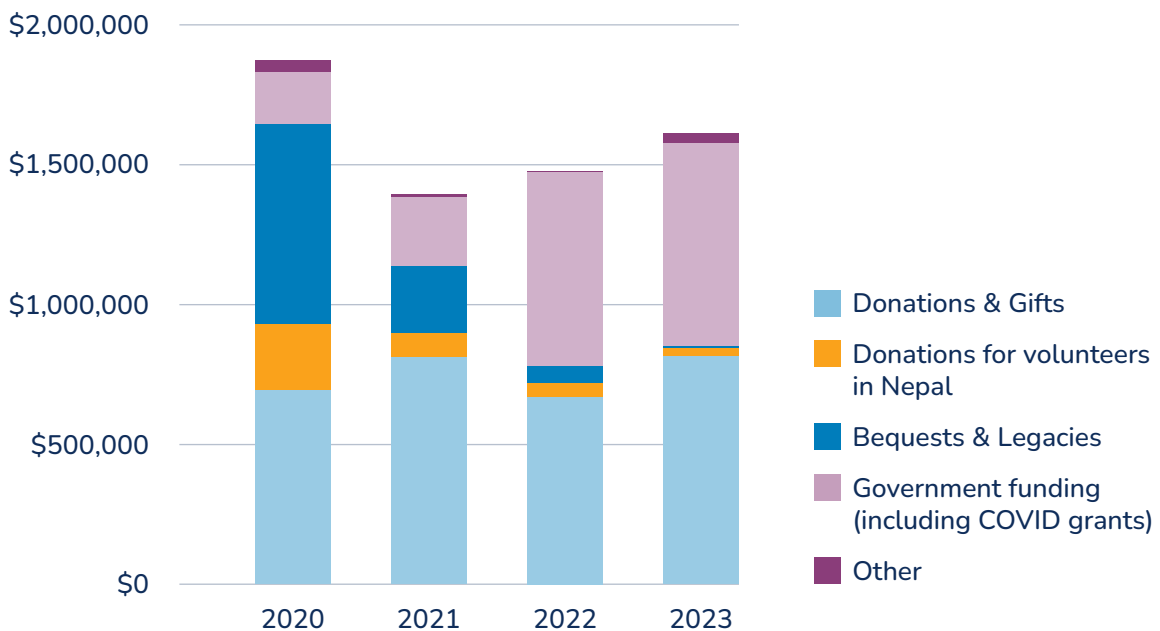
Raising funds to support partners and their programs in Nepal remains a key priority for INF Australia. Fundraising income has improved after a decline during the COVID years of 2021 and 2022, however it is still impacted by increasing costs of living across Australia.

INF Australia has been able to maintain its staffing in the Australian office, necessary to encourage new supporters and donors and to manage the increasing governance and reporting compliance.

## SOURCE OF INCOME

INF Australia's main sources of income are from Donations and Bequests and from the Department of Foreign Affairs & Trade (DFAT).

### Financial revenue (excluding non-monetary donations)



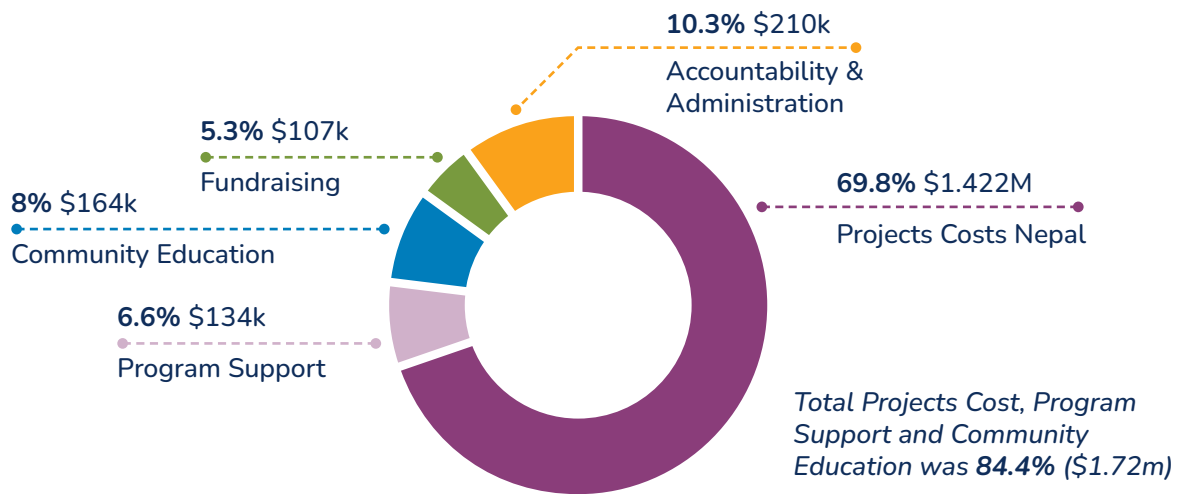
Financial revenue streams have changed over the last 4 years.

- Donations and Gifts income has remained relatively constant, though we did experience a downturn during the COVID period of 2021 and 2022.
- A number of INF volunteers returned from Nepal during the COVID period, resulting in a decrease in donations for volunteers and in donations non-monetary (value of contribution by volunteers).
- With full accreditation received in 2021, there has been a significant increase in Government income from DFAT.
- Bequest income is encouraging and very welcome, however the timing is unpredictable.



# USE OF FUNDS

## How funds were used 2022-23



### Funds to Health & Community Development Programs

Funds invested into medical, community health, development and empowerment programs run by INF Australia's partner organisations in Nepal and volunteers working in Nepal supporting this work

### Program Support Costs

Expenses incurred in overseeing, monitoring, and evaluating the programs we support in Nepal to ensure they are effective and sustainable

### Community Education

Expenses related to awareness-raising, advocacy, and education about our work in Australia

### Fundraising

Expenses related to growing INF Australia's financial support, including the management of donations and government grants

### Accountability & Administration

Funds invested into financial management, governance administration, supporter services and human resources functions to ensure INF Australia is effective and accountable

Gardening in Gaumul.  
Photo: INF Nepal





# SUMMARY FINANCIAL REPORT 2022-23

The International Nepal Fellowship (Australia) Ltd (ABN 75 090 528 500)

The financial report has been derived from the full audited accounts of The International Nepal Fellowship (Australia) Ltd. For a full copy of our audited financial statement, please contact INF Australia on 02 9411 1195 or [ausoffice@inf.org.au](mailto:ausoffice@inf.org.au). The report is also available at [inf.org.au/Resources/Reports](http://inf.org.au/Resources/Reports) and Publications

All figures are in AUD (\$).

## Statement of Profit and Loss and Other Comprehensive Income

AS AT 30 JUNE 2023

	2023 \$	2022 \$
<b>Revenue and other income</b>		
Donations and gifts		
Monetary	844,665	717,601
Non-monetary	240,570	131,014
Bequests and legacies	6,500	62,268
Grants		
Department of Foreign Affairs & Trade	725,148	693,246
Interest income	8,313	1,948
Other income	25,633	94
<b>Total revenue and other income</b>	<b>1,850,829</b>	<b>1,606,171</b>
<b>Expenditure</b>		
International Programs		
Funds to development programs	1,049,322	1,030,508
Funds to welfare and service programs	152,801	180,589
Program support costs	134,224	123,478
Non-monetary expenditure – development programs	113,376	-
Non-monetary expenditure – welfare & service programs	106,329	107,434
Community Education	164,099	95,774
Fundraising costs		
Public	97,363	100,209
Government	10,147	9,160
Accountability and Administration	188,673	190,822
Non-Monetary Expenditure	20,865	23,580
<b>Total expenditure</b>	<b>2,037,199</b>	<b>1,861,554</b>
Deficit for the year	(186,370)	(255,383)
<b>Total comprehensive (loss)/ income for the year</b>	<b>(186,370)</b>	<b>(255,383)</b>

## Statement of Financial Position

AS AT 30 JUNE 2023

	2023	2022
	\$	\$
<b>Current assets</b>		
Cash and cash equivalents	1,029,768	1,260,702
Trade and other receivables	17,748	13,123
Prepayments and other assets	104,400	42,917
Inventories	1,389	1,167
<b>Total current assets</b>	<b>1,153,305</b>	<b>1,317,909</b>
<b>Non-current assets</b>		
Property, plant and equipment	57,835	115,046
<b>Total assets</b>	<b>1,211,140</b>	<b>1,432,955</b>
<b>Current liabilities</b>		
Trade and other payables	24,424	27,964
Borrowings	751	1,267
Lease liabilities	25,324	23,787
Employee benefits	32,454	21,143
Deferred grant income DFAT	35,148	-
<b>Total current liabilities</b>	<b>118,102</b>	<b>74,161</b>
<b>Non-current liabilities</b>		
Lease liabilities	-	78,271
Employee benefits	-	1,115
<b>Total non-current liabilities</b>	<b>-</b>	<b>79,386</b>
<b>Total liabilities</b>	<b>118,102</b>	<b>153,547</b>
<b>Net assets</b>	<b>1,093,038</b>	<b>1,279,408</b>
<b>Equity</b>		
Designated funds	794,721	957,578
General funds	298,317	321,830
<b>Total equity</b>	<b>1,093,038</b>	<b>1,279,408</b>



# Governance

## BOARD MEMBERS

### Ravi Underwood

BOARD CHAIR / FINANCE AND RISK COMMITTEE

Ravi has a strong finance background as CFO of several large, listed companies in Australia. He was first involved with INF in 2007 and was Board Director from 2007 to 2013. Ravi returned to the Board in 2018 and has been its Chair since 2019.

### Rudra Paudel

FUNDRAISING COMMITTEE

A journalist, and owner of an Australian franchise business, Rudra also serves as an Elder in United Nepalese Christian Church. He has been an INF Australia Board member since 2016.

### Kate Clark

NEPAL PROGRAMS COMMITTEE

Kate is a General Practitioner specialising in travel medicine. She is a long-time supporter of INF Australia and has been on the Board since 2017.

### Richard Reeve

FINANCE AND RISK COMMITTEE

Richard is an Endorsed Minister with the Churches of Christ in NSW and ACT. He is a qualified accountant [FCPA] and holds a Bachelor of Theology. He and his family served with INF Nepal from 2001 to 2006.

### William Hood

DEPUTY CHAIR / POLICY REVIEW COMMITTEE

Born in India to a missionary family, William has worked in teaching and information systems. He has been on the Board of INF Australia since 2017 and its Deputy Chair since 2019.

### Richard Groves

FINANCE AND RISK COMMITTEE

Richard has years of experience in risk management, as well as financial control and audit, governance and compliance. He has been a Board Member since 2013.

### Nicola McGunnigle

POLICY REVIEW COMMITTEE

Nicola is an Environmental Scientist with AECOM Australia, and is doing PhD research into improved water utilisation in the mid-hills of Nepal.

### Stephanie Judd

BOARD MEMBER

Stephanie is a qualified legal practitioner and served on the board from September 2022 until July 2023.



INF Australia is accredited by the Department of Foreign Affairs and Trade (DFAT) which is responsible for managing the Australian Government's aid program. We receive support through the Australian NGO Cooperation Program (ANCP).



INF Australia is a member of the Australian Council for International Development (ACFID), the peak body for Australian charities involved in international development, and a signatory to their Code of Conduct.



INF Australia is also a member of Missions Interlink, a network of Australian Christian agencies actively engaged together in effective cross-cultural and global mission.

# Family & Partnership

INF is an interdependent, worldwide family of Christian organisations with a common vision of life in all its fullness for Nepal's poor and disadvantaged people and communities.

## 1 INF Nepal

The main implementing partner in Nepal is based in Pokhara and led by Executive Director Krishna Adhikari. INF Nepal employs more than 300 Nepali staff and several expatriate volunteers, and coordinates and administers hospitals, health centres and community projects.

## 2 INF International

With a small office in Kathmandu, INF International facilitates the recruitment and care of expatriate workers, the international transfer of funds to INF Nepal and contributes leadership services to the INF family.



## 3 INF Australia

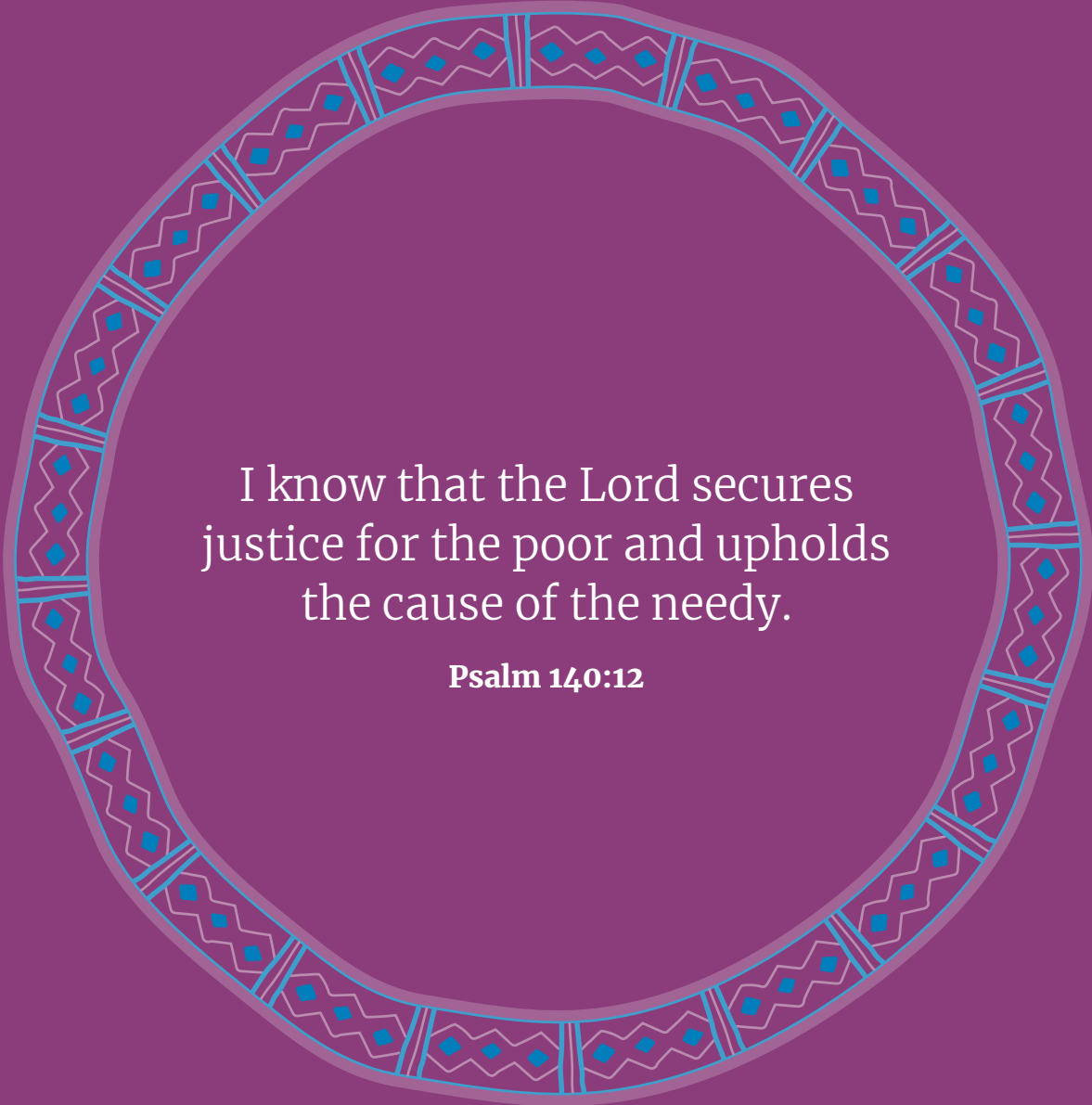
Provides direct financial support for some of INF Nepal's hospitals and community projects, as well as supporting training, project monitoring and evaluation, and funding of key technical roles, and providing skilled volunteer workers. In Australia, we engage with individual supporters, churches, schools and with the Nepalese-Australian community to raise support, awareness and finances.

## 4 5 6

### INF New Zealand, INF Canada, INF UK

Raise financial and prayer support for INF Nepal's work and projects, as well as identifying and supporting volunteers to serve.





I know that the Lord secures  
justice for the poor and upholds  
the cause of the needy.

**Psalm 140:12**



INTERNATIONAL NEPAL  
FELLOWSHIP **AUSTRALIA**

PO Box 708  
Crows Nest, NSW 1585  
02 9411 1195  
ausoffice@au.inf.org  
ABN 75 090 528 500

[www.inf.org.au](http://www.inf.org.au)

